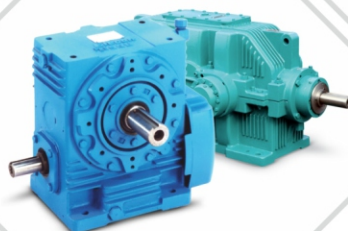


Don't  
Think The **BEST**,  
Think What's  
The **NEXT...**



**SUNRISE** EFFICIENT MARKETING LTD  
ENERGY EFFICIENT PEOPLE

ISO 9001 - 2015



**EFFICIENT** SOLUTION | **BEST** SERVICE | **COMPETITIVE** PRICE | **TIMELY** DELIVERY

# Sunrise Efficient Marketing Limited

was previously known as Sunrise marketing and services was established in the year 2002. Company has strategically added new feathers to its cap in terms of expanding infrastructure, addition of new business line, collaborating with different industry leaders. Objective is to provide high quality and energy efficient product and automation solution using the latest technology for our customers. It has achieved a consistent growth; reputed clientele with the help of customer oriented approach and work ethics. Our reputation is built on commitment, service and customer satisfaction. We are amongst India 's leading stockiest / dealer / channel partner for various well known companies.

Our strength is ontime and single stroke deliveries. We are keeping huge stock of all types of IE 2, IE 3 and IE 4 grade Induction motors, power transmission products such as worm and helical gears boxes, Domestic and agriculture pumps, all types of Lubricants such as Hydraulic oil, gear oil, and thermic fluid, industrial pumps, chemical pumps to meet the delivery commitments We are converting and updating machines with automation products to take maximum utilisation of machines. We intend to maintain our legacy of long-term business association with our partners and improve further, by becoming more system driven, efficient and faster.

## WHY US

We assure the best services at the most competitive rates.

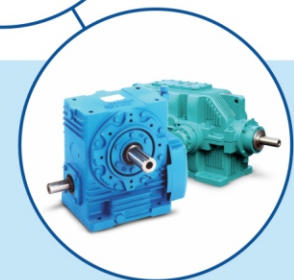
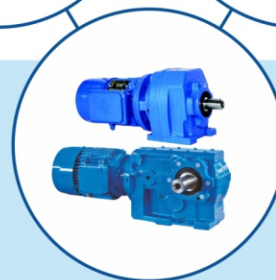
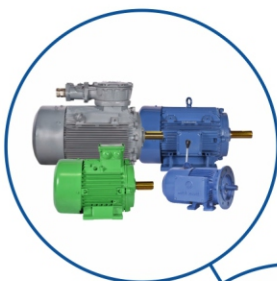
Huge inventory for immediate & timely delivery.

Regular research & development team to support sales & services.

Authorized dealers of top electrical and mechanical eng leading brands.

Efficient professional team.

MOVING FROM  
**ENERGY TO**  
**ENERGY**  
**EFFICIENT**







## VISION

To be one of the biggest Suppliers in the field of Electro-Mechanical Solutions, Automation, Fire & Safety, Power Supply & all kinds of Wind & Solar Energy Products & Services with timely delivery & after sales Services . We are committed to excellence and expanding our business operations all over the India.

## MISSION

We aim to be a leading supplier to chemicals and pharmaceuticals industry, metals, material handling, cranes, power, paper, food and beverages, packaging, glass industries and textiles, amongst others.

We aim to be the partner of choice for our clients by offering them the latest technologies and value added solutions.

We aim to promote conservation of resources, protection of the environment by energy efficient solution/product.

Our strength lies in our workforce and we aim to nurture, train and mentor them.

## OUR PRODUCTS

**MOTOR**

**LUBRICANT**

**GEARS**

**LIGHTING**

**GREASE**

**PUMP**

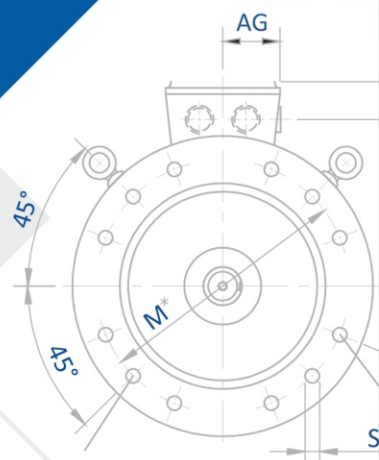
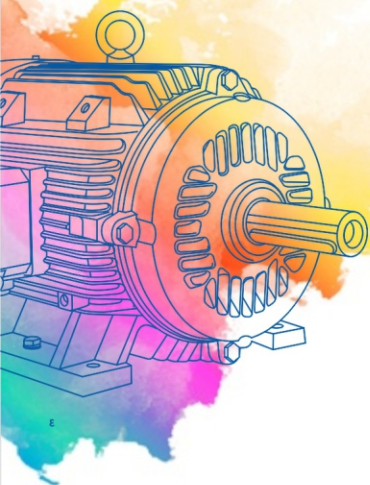
**DRIVES**

**PANELS**





- Motor For General Applications
- Motor For Hazardous Area
- Crane & Hoist Duty Motors
- Brake Motors
- Slip Ring Motors
- Textile Motors - Ring Frame
- Marine Duty Motors
- Roller Table Motors
- Medium Voltage Motors
- High Efficiency IE4 & IE5



# A MOTOR FOR EVERY NEED



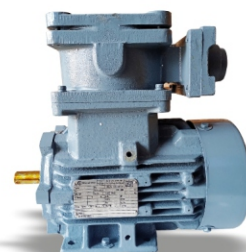
## IE2



IE3



## IE4



FLP

## HIGH EFFICIENCY MOTOR

## PREMIUM EFFICIENCY MOTOR

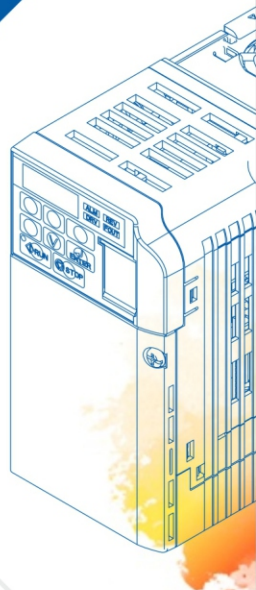
**SUPER PREMIUM  
EFFICIENCY MOTOR**

## FLAME PROOF MOTOR





# YASKAWA



## EFFORTLESS NETWORK INTEGRATION

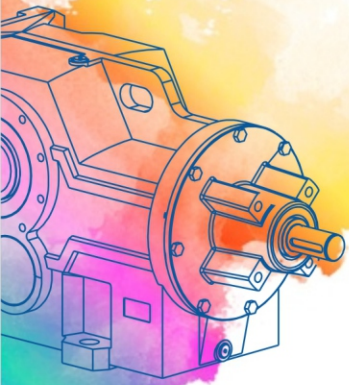
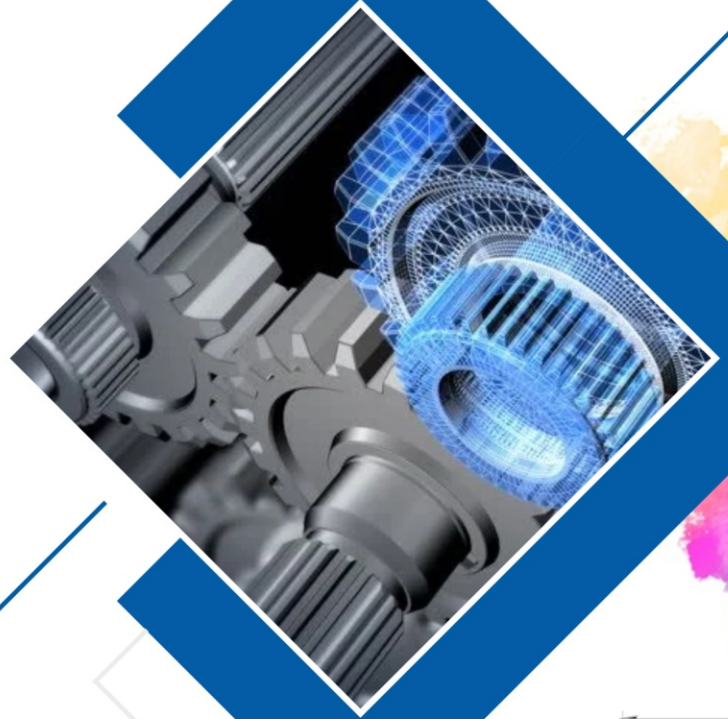
- High Performance Vector Control Drive GA700 / A1000
- Compact Vector Control Drive V1000 / GA 500
- Compact V/F Control Drive J1000
- Matrix Converter U1000 (Low Harmonics)
- D1000 & R1000 for Regenerative Drive
- Special Purpose Inverter Drive : L1000A for Elevator Application
- High Performance Vector Control Drive G7

### FLEXIBLE AND RELIABLE



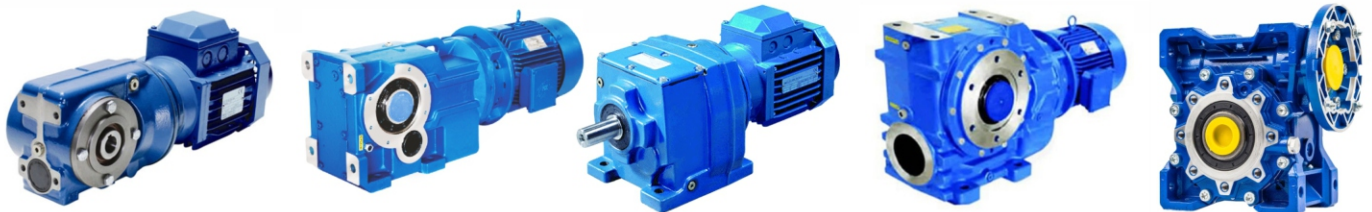
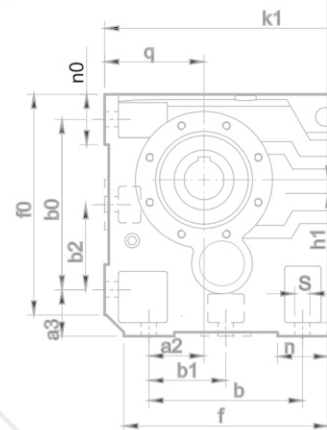


- Helical Inline Geared Motor
- Parallel Shaft Mounted
- Helical Bevel Geared Motor
- Planetary Geared Motor
- Loose Gears



## TAILOR-MADE GEAR UNITS

ACCORDING TO YOUR  
REQUIREMENTS



INTEGRITY AND INNOVATION IN ENGINEERING DESIGN







INCREASE PRODUCTIVITY  
**REDUCE DOWN TIME**

- Hydraulic Oil
- Ind. Gear Oil (Mineral & Synthetic)
- Compressor Oil
- Spindle Oil
- Turbine Oil
- Refrigeration Oil
- Transformer Oil
- Engine Oil (Diesel & Gas)
- Thermic Fluid
- All type of Industrial Greases, Transmission Oils, and Rust Preventive & Dewatering Fluids

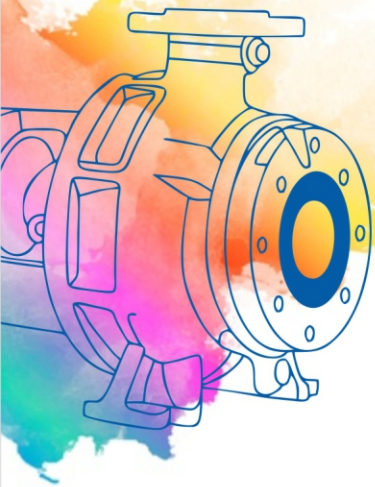
**HIGH PERFORMANCE LUBRICANTS**





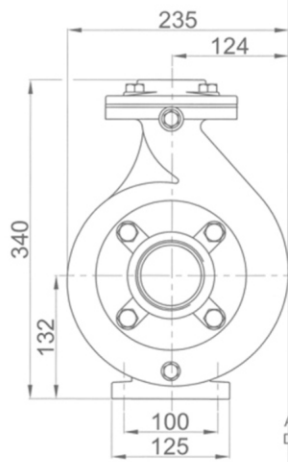
Enriching Lives

- Mono Block Pumps
- Self Priming Pumps
- Submersible Sewage Pumps
- Borewell & Openwell
- Submersible Pumps
- Vertical Inline Pumps
- S.s Monobloc Pumps
- Pressure Pumps



**BEST IN CLASS**

LOWER POWER CONSUMPTION  
MOST DURABLE



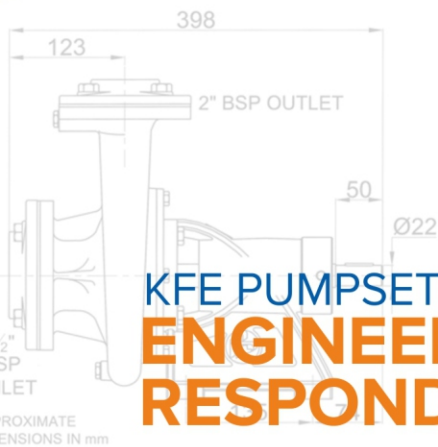
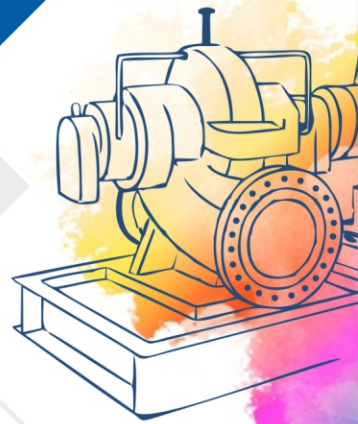
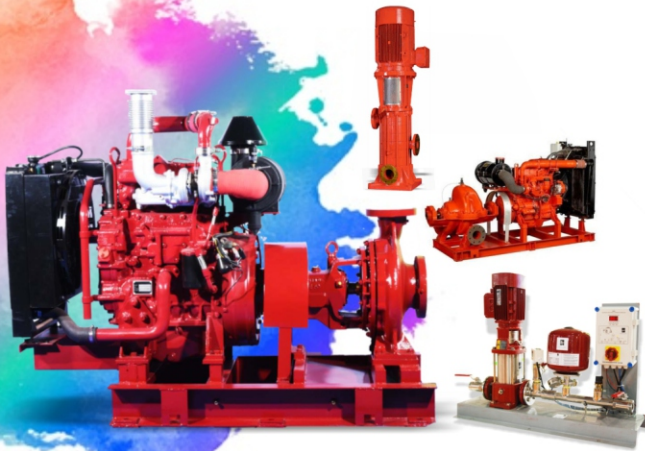
**PUMPING PROSPERITY IN YOUR LIFE**







Enriching Lives



## KFE PUMPSETS ENGINEERED TO RESPOND SWIFTLY

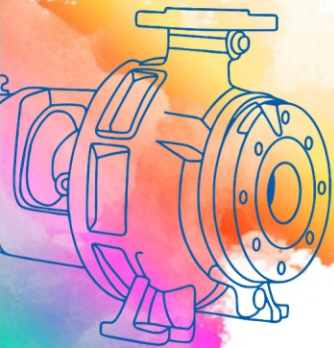
- Diesel Driven Fire Pump Set
- Electric Driven Fire Pump Set
- Jokey Pump Set
- Msmo Vertical Fire Pump Set
- Horizontal Split Casing Pump Set
- Solid Handling Non Clog Pump Set
- End Suction-back Pull Out Pump Set
- Auto Panel for Fire Pumps

**KIRLOSKAR ENGINE WITH UNMATCHED QUALITY  
AND RELIABILITY FOR FIRE PUMPS**

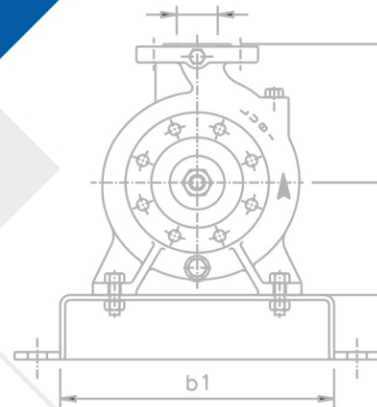




- End Suction Pumps
- Centrifugal Monoblock Pumps
- Sewage/Effluent Pumps
- Drainage Pumps
- Close-coupled Pump
- Coolant / Immersible Pump
- Corrosion Resistant Thermoplastic Pumps



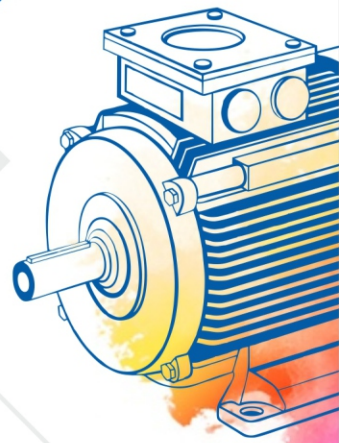
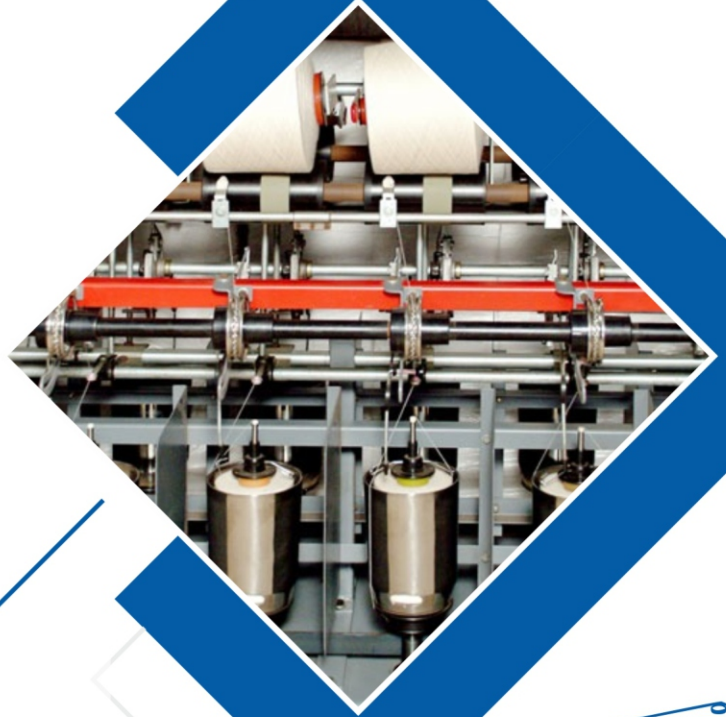
## NEW ERA FLUID MANAGEMENT



UPHOLDING EXCELLENCE IN THE PUMP INDUSTRY







HIGHER EFFICIENCY  
**LOWER CONSUMPTION**

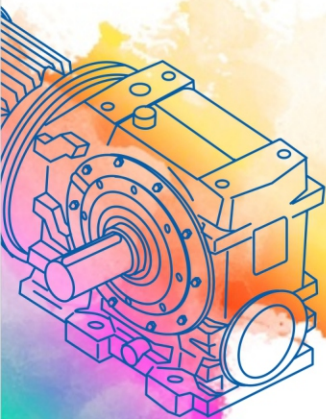
- Ring Frame Motors For Textile Stenter Machine.
- Ring Frame Motors For Textile Dryer Machines.
- Standard High Efficiency Motors.
- Customised Auto Trolly Motors For Textile Printing Machines.
- Customised Motors For Cooling Tower.
- Customised Motors For TFO Machines.

**TAILOR MADE DESIGN TO DELIVER THE BEST**



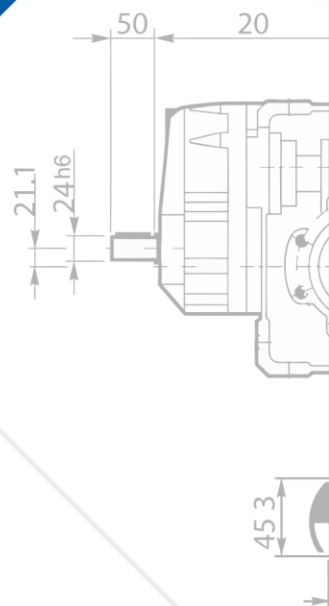
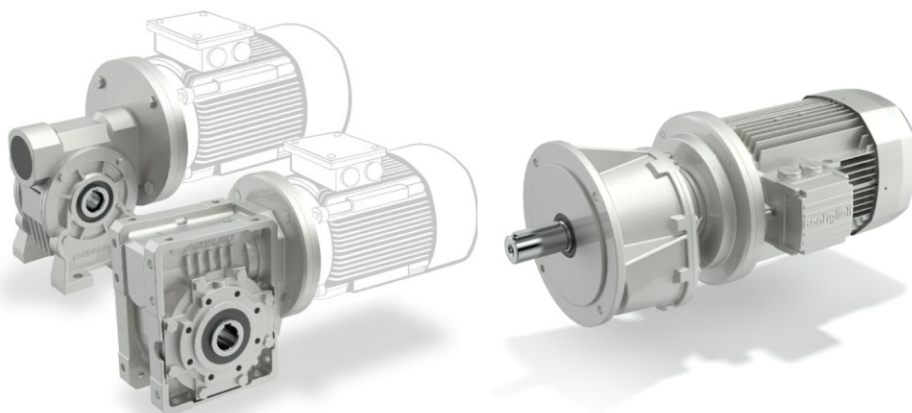


- Inline Helical Geared Motors
- Bevel Helical Gear Motors
- Worm Gear Motors
- Planetary Gear Units



## MECHATRONIC SOLUTIONS

WITH HIGH PRECISION  
AND DYNAMIC



OPTIMISED GEAR DESIGN FOR  
MAXIMUM EFFICIENCY AND MINIMUM NOISE



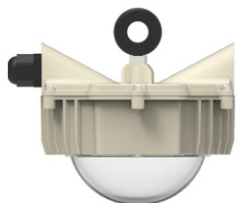
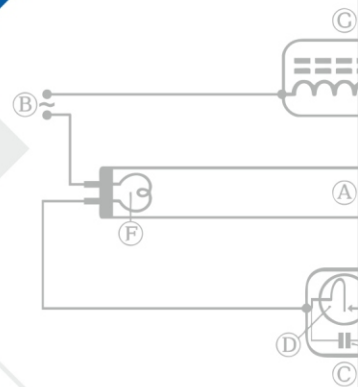


# Crompton

- Led Street Light
- Commercial Light
- Office & Home Light
- Led Wellglass Light
- Highbay Light
- Under Canopy Light

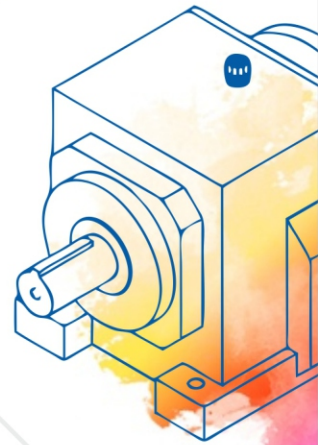
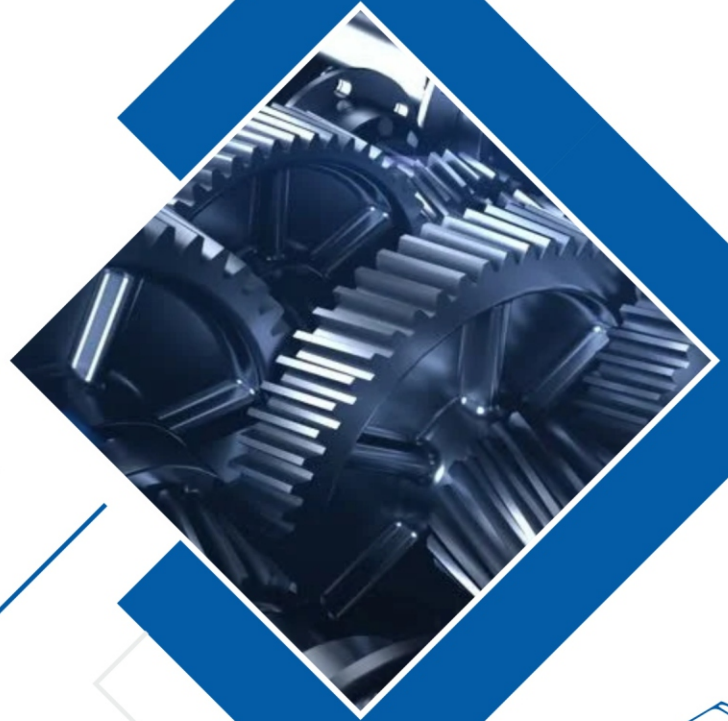
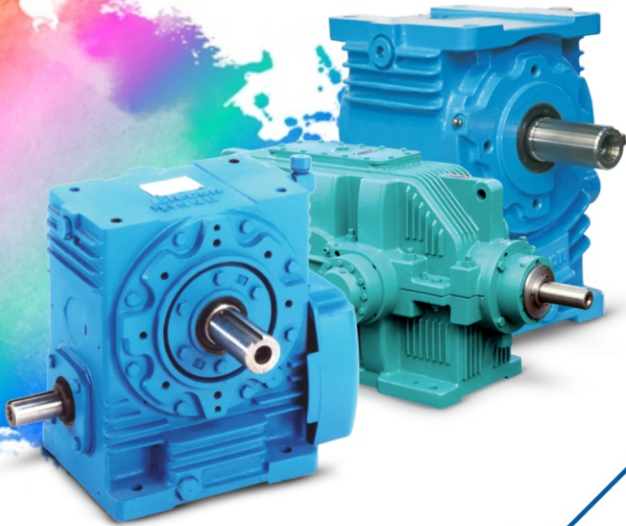


**PRESENTING OUR**  
**BRIGHTEST BEST!**



**VERSATILE INNOVATION & DURABLE PERFORMANCE**





YOUR RELIABLE PARTNER  
OF CHOICE FOR  
**ALL GEAR  
TRANSMISSION NEEDS**

- Worm Gearbox
- Inline Helical Gearbox
- Helical Gearbox
- Bevel Helical Gearbox
- Planetary Gearbox

**MORE EFFICIENCY. MORE PRODUCTIVITY. MORE PROFIT.**





**AUTHORISED DISTRIBUTOR**

**10+ BRANDS**

**WELL EXPERIENCE TEAM**

**50+ EMPLOYEES**

**SATISFIED CUSTOMERS**

**15000+ CUSTOMERS**

**CHANNEL PARTNER**



Enriching Lives



**YASKAWA**



**SUNRISE EFFICIENT MARKETING LTD**

ISO 9001 - 2015

ENERGY EFFICIENT PEOPLE



## **CORPORATE OFFICE**

### **SUNRISE EFFICIENT MARKETING LTD**

MZ Floor, Aakashbhumii Complex, Opp. B.R.C. Colony,  
Nr. Daxeshwar Mahadev Mandir,  
Fateh Nagar, Pandesara, Surat 394 220., Gujarat (India).

☎ +91 93766 60507/ +91 261 2890045,

✉ info@sunrisemarketing.net | sales@sunrisemarketing.net

🌐 www.sunrisemarketing.net | www.sunriseefficientmarketing.com

### **BRANCH OFFICE**

Plot No. 307/311, Sangam Industrial House,  
Nr. Ramdev Chokdi, Opp. Urvashi Paper Mills, G.I.D.C.,  
Ankleshwar - 393002, Gujarat (India).

### **WARE HOUSE**

Plot No. 2123, Road No. 2, G.I.D.C., Sachin,  
Surat - 394 230, Gujarat (India).

☎ +91 92288 25503/85117 29143

